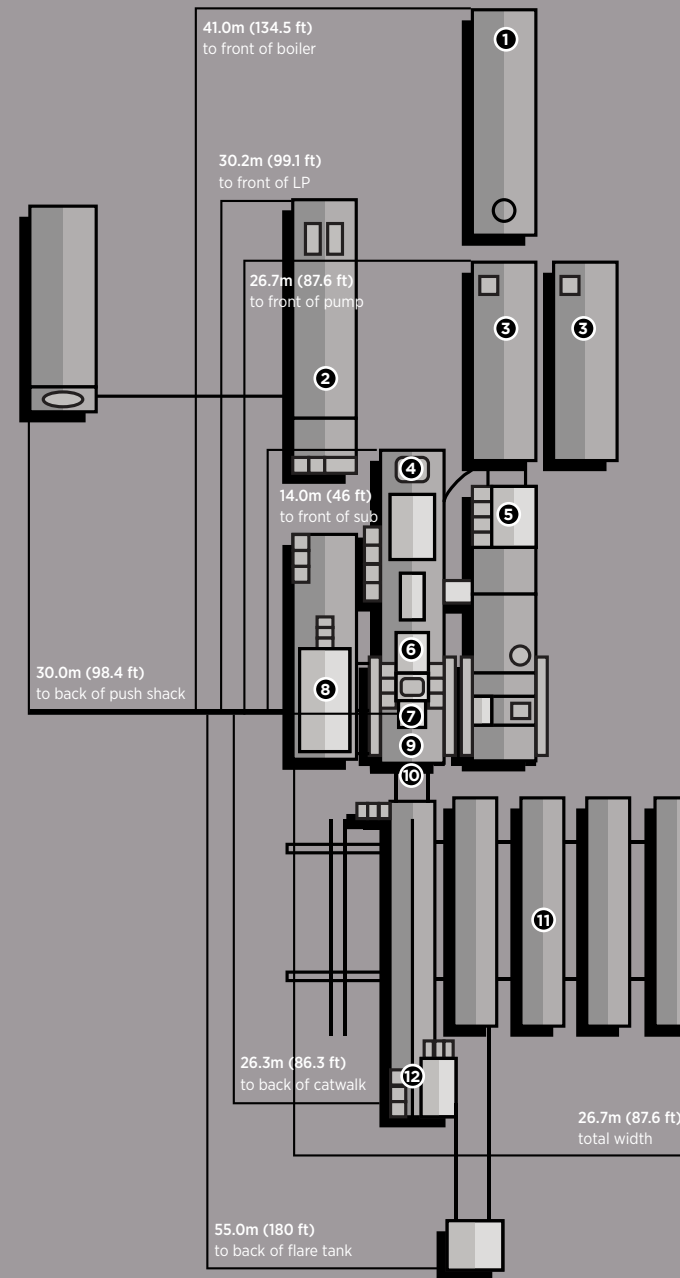


RIG #5

111,000 DAN / 250,000 LBS
MAX HOOKLOAD

3,000M / 10,000'
VERTICAL DEPTH RATING



- ① **BOILER:**
1 - 100hp Williams&Davis Boiler with self contained 10,000L (2,600 gal) fuel and 8m³ (2100 gal) water tank.
- ② **COMBINATION BUILDING:**
2 - 540kw Stamford powered by 2 - 630hp Detroit Series 60 (14L) engines. Monitoring provided by a Woodward panel, which also synchronizes the two generators, and allows them to run in series. Also houses a 12 man change shack, and a 20,000L (5,200 gal) fuel storage tank.
- ③ **MUD PUMPS:**
2 - F-1000 triplex pump, powered by 2 - Detroit Series 2000 (V-12-1005hp), w/XDR Pacific-Rim hydraulic clutch. Max 125spm. 2nd pump available on request.
- ④ **MAST:**
Hodgson Telescopic Range 3 Single Mast. Hydraulically raising (Max static hook load 133,000 daN (300,000 lbs) - 8 lines)
- ⑤ **MUD TANKS:**
1 - 50m³ (315 bbl), 4 Compartment circulating system, with additional pill tank and trip tank.
2 - Agitators situated in suction tanks; low pressure system powered by 2 - 5 x 6 Mission Magnum C-pumps, one with 14" impeller for pumping aerated mud systems.
- ⑥ **DRAW WORKS:**
TSM 500 (500hp) Rated for 111,000 daN (250,000 lbs), Powered by 1 - Detroit Series 60 (14L), w/6 speed Allison transmission. Auxiliary braking by Eaton 224-disc brake.
- ⑦ **TOP DRIVE:**
Warrior 175T Split Block Top Drive with 2 - Speed Haglund and Electric HPU (Max Static Load 155,000 daN (350,000 lbs)). Also has 8,000 daN (18,000 lbs) pull down capability. Max TD rotary @ 160rpm Max continuous torque @ 25,000 ft/lbs
- ⑦ **TABLE:**
Rostel 17.5" (444mm) powered hydraulically-for auxiliary use only.
- ⑧ **WATER TANK/DOGHOUSE:**
Hydraulic raising system-separate sub-storage room. Stream recorder system. 60m³ (400 bbl) useable water tank.
- ⑨ **SUBSTRUCTURE:**
Hodgson Substructure. Hydraulic Self Leveling. KB-Ground 4.3m (14').
- ⑩ **BLOWOUT PREVENTERS:**
1 - 279mm X 21,000 kPa (11" x 3,000 psi) Spherical Annular
2 - 279mm X 21,000 kPa (11" x 3,000 psi) Townsend Pipe/Blind Single Gate Ram
- ⑪ **PIPE TUBS:**
3 - Hydraulically controlled range 3 tubs
1 - Loader Accessible range 3 tub
- TUBULARS:**
3,000m (9,800') 102mm (4") - 4 FH, X-95 Drill pipe
8 - 159mm (6 1/4") x 4 1/2" XH, Drill Collars
12 - 127mm (5") x 3 1/2" IF, Drill Collars
Available - 102mm (4") - 4 FH, HWDP
- ⑫ **CATWALK:**
Skate Catwalk, with hydraulic skate, and leveling racks attached. Also houses nace trim 52mm & 76mm 21,000 kPa (2" x 3" 3,000 psi) Manifold.